

Friends of Seaton No motorized vehicle signs report

Problem; The Seaton Trail is being damaged by motorcycles and ATV's. This issue is mostly seen in Section 1 (most of the trail) and Section 3 near 407 bridge and gravel pit.



Solution; The Friends of Seaton have volunteered to put up **Unauthorized Use Of Motorized Vehicle Is Strictly Prohibited** signs.

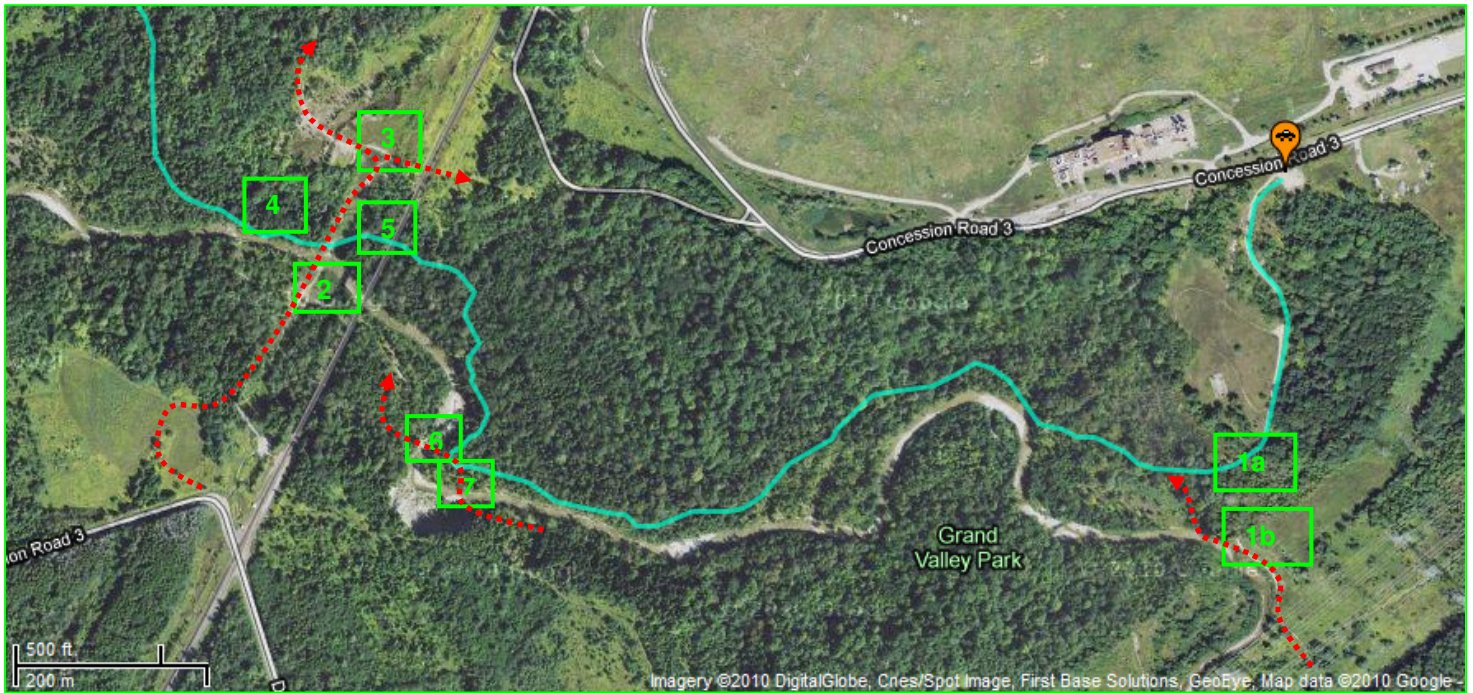
Purpose;

1. To put ATV's on notice that they should not be riding on the Seaton Trail.
2. Educates the valid users which might be able to put more monitoring and pressure on the illegal users.
3. Allows us to follow through and report unauthorized use.



Date	Comments
May 10, 2010	Original report – Gary Ataman
July 23, 2010	Picked up Unauthorized vehicle signs from Del
Aug 6, 2010	Picked up poles and hardware from Mark at Del
Aug 9, 2010	Placed 12 signs in section 1
Aug 28, 2010	Planning to add additional steel pole mounted signs to section #1
Oct 17, 2010	Put up 10 poles with Linzi, Derek, Craig, Jim, Fred, Sophia and Gary . Pole 2,3,6,7,8b,8c,9a,9b,9c,10

Section 1 From Concession # 3 Trail Head to Railway Bridge



Sign #1a small sign placed on wooden post at **1N005**. Sign de-faced. Replaced by bilingual large sign on Aug 9, 10.

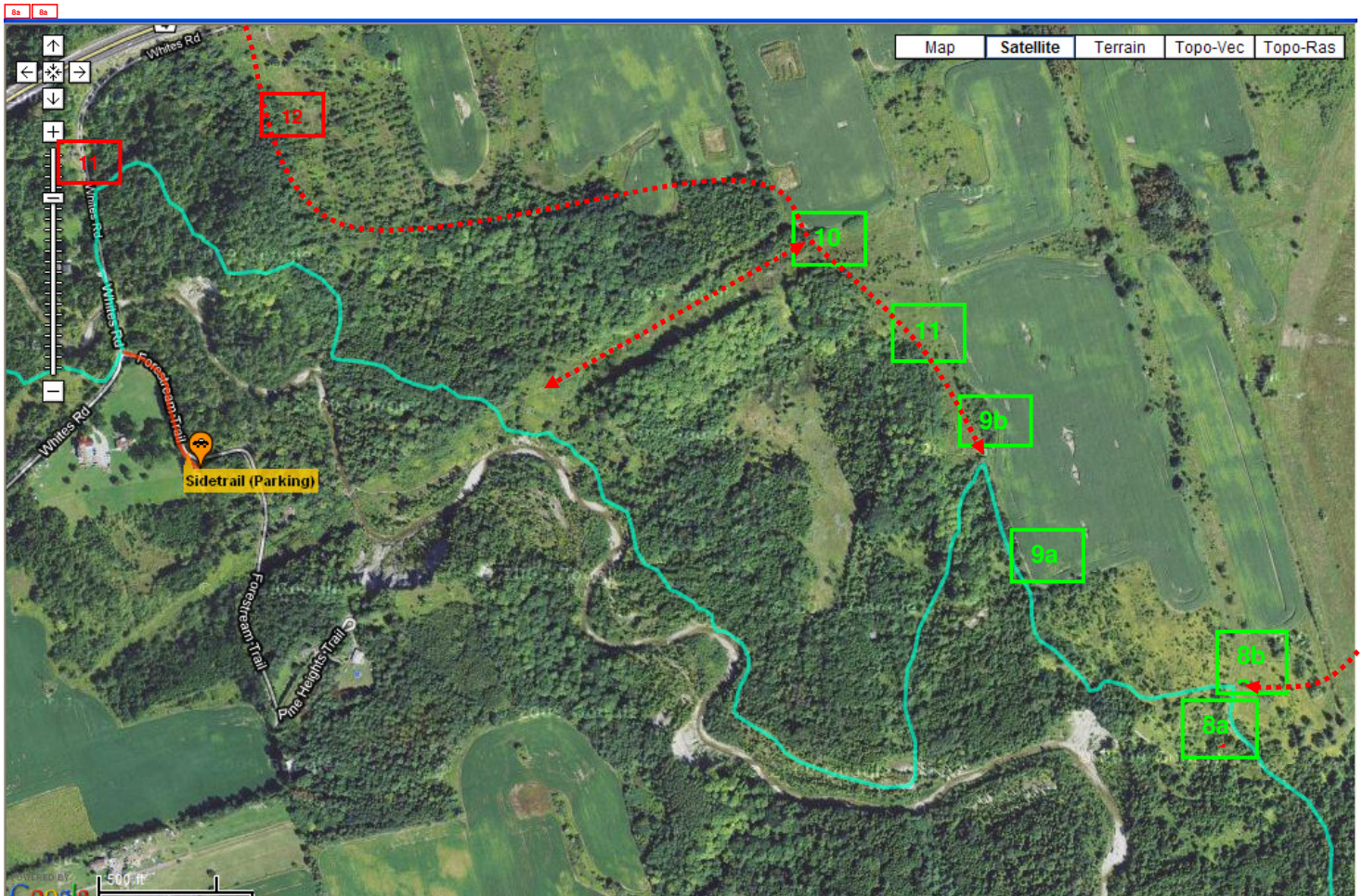
Sign #1b large sign screwed to tree at river and trail access (heading north).

Sign #2 small sign placed on tree at river crossing (north side) **1S069**. Sign ripped off tree. Just screws left. Noted Aug 9, 10. On Oct 17, 10 replaced by bilingual large sign + steel pole on south side of river

Sign #3, 4, 5 large signs have been placed at trail heading north and south and top of the hill. Screwed to trees and wooden fence pole at top of hill on Aug 9, 10. Top of hill sign show signs of pellet gun target practice. Dangerous activity since stray pellets will be raining down on trail in river valley. Sign replaced with bilingual large sign on Oct 17, 10.

Sign #6 and #7 large signs have been placed at ATV river crossing at post **1N019 to 020** on trees on Aug 9, 10. Signs moved to steel poles on Oct 17, 10. Sign #6 on east side of river. Sign # 7 on south side of river.

Section 1 From Railway Bridge to Clarks Hollow



Sign #8a large sign has been placed at ATV trail at top of the hill at post **1S057**, looking south on Aug 9, 10.

Sign #8b large sign has been placed at ATV trail at top of the hill at post **1S057 area**, looking west on Oct 17, 10.

Sign #9a large sign screwed to tree at ATV access trail at corner of farm field on Aug 9, 10. Sign moved to steel pole on Oct 17, 10.

Sign #9b large sign screwed to tree at ATV trail at top of the hill at post **1N047** on Aug 9, 10. Sign moved to steel pole on Oct 17, 10.

Sign #10 large sign screwed to tree at ATV trail at top of the hydro pole hill on Aug 9, 10. Sign moved to steel pole on Oct 17, 10.

Sign #11. large sign mounted on steel pole in the middle of ATV trail on Oct 17, 10.

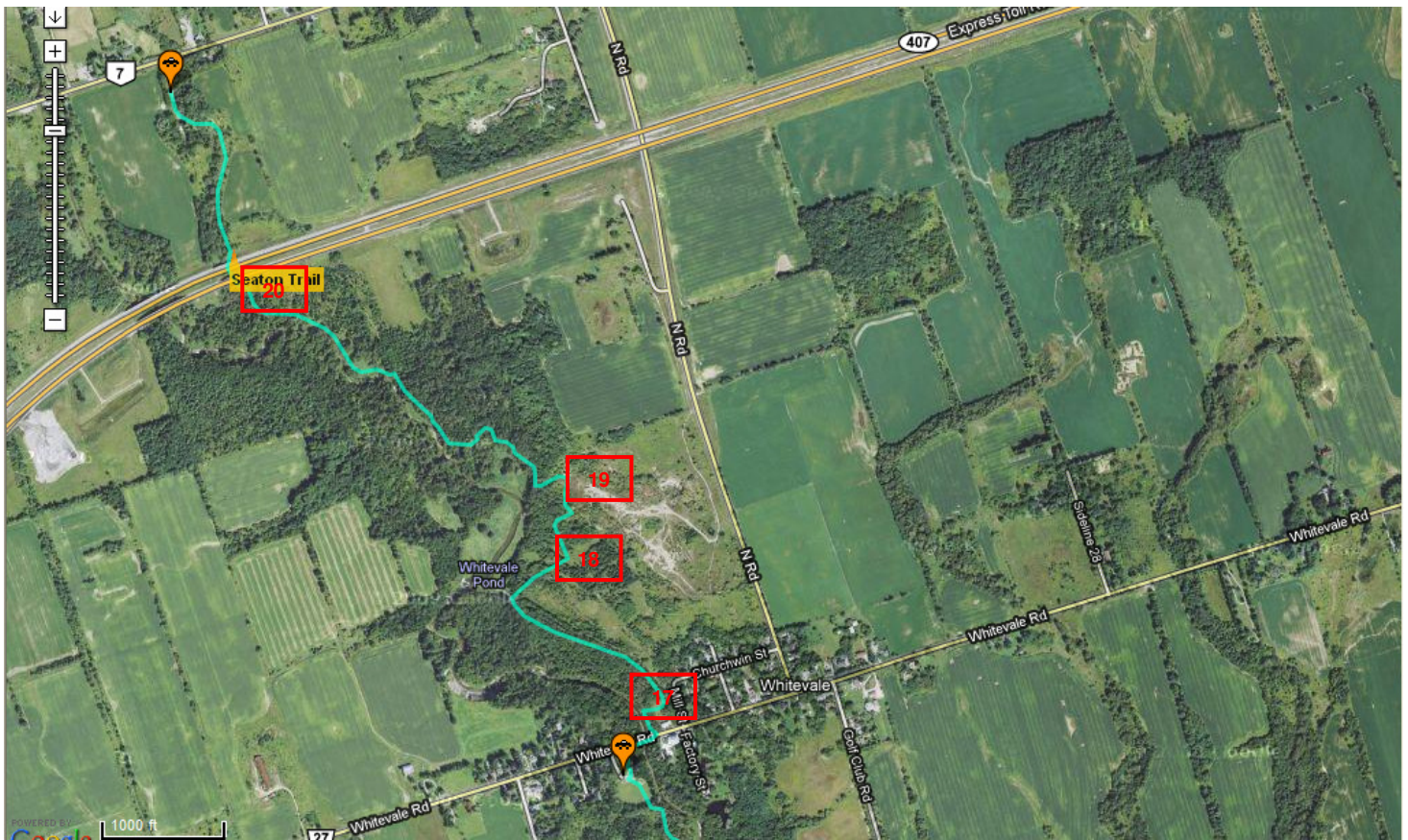
Sign #11 large sign to be placed at Old Whites Road trail head. Need additional signs.

Sign #12 large sign to be placed on tree at top of hill at side ridge trail. Need additional signs.

Section 2 From Clarks Hollow to Whitevale



Section 3 From Whitevale to Green River



Sign #17 large sign to be placed on tree at Mill street trail head heading north.

Sign #18 large sign + pole to be placed at gravel pit area heading south.

Sign #19 large sign + pole to be placed at gravel pit area.

Sign #20 large sign to be placed on tree south of highway #407 heading south on trail. TRCA and Del are planning some barrier work in this area.